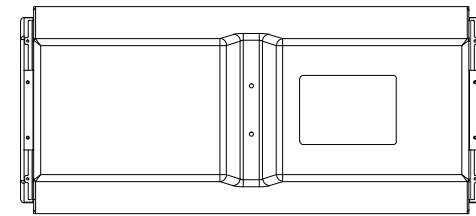
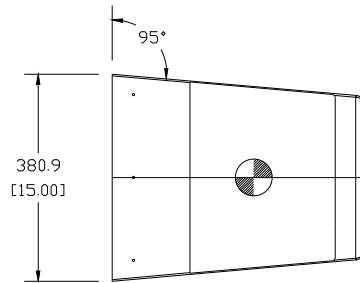
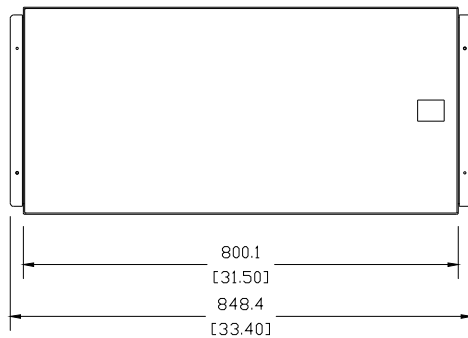
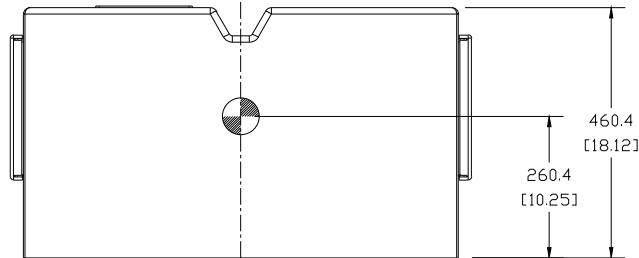


THESE DRAWINGS AND SPECIFICATIONS ARE THE PROPERTY OF JBL INCORPORATED. THEY ARE ISSUED IN STRICT CONFIDENCE AND SHALL NOT BE REPRODUCED OR USED AS THE BASIS FOR MANUFACTURE OR APPARATUS WITHOUT WRITTEN PERMISSION.

REVISIONS						
CHG	LTR	DESCRIPTION	DRFT	D.C	DATE	APPR
	A	RELEASE TO MARKETING	A			



- COMPONENTS: LF: 2X 2261FF ; HF-3X D2415
- INPUT CONNECTORS: 2 TERMINAL BARRIER STRIP.
- GRILL: 16 GA. PERFORATED CRS, POWDERCOATED, GRAY CLOTH BACKING.
- MATERIALS: FIBER GLASS.
- FINISH: GELCOAT
- SUSPENSION POINTS: 6X M10 PER SIDE.
- WEIGHT: 37.7 kg (83 LBS)

⑧ CENTER OF GRAVITY (CG) ●

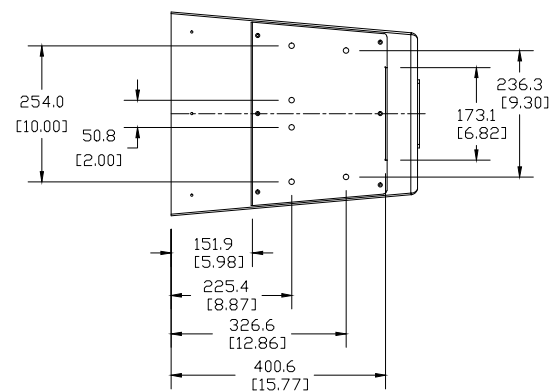
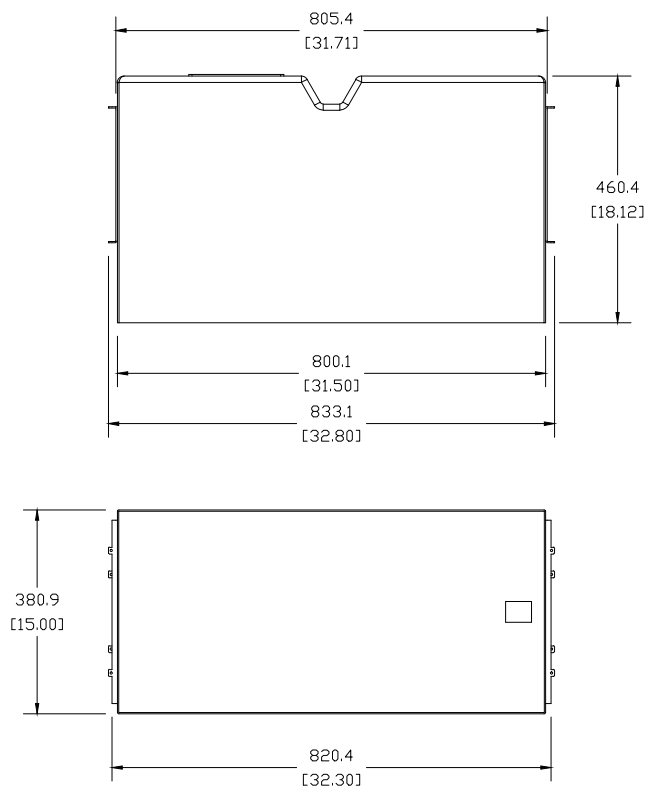
NOTES: (UNLESS OTHERWISE SPECIFIED)

TOLERANCES (UNLESS OTHERWISE SPECIFIED)		JBL PROFESSIONAL A Harman International Company Northridge, California 91329 U.S.A.	
XX ± .063 INCH		TITLE CUSTOMER DWG VLA-C265	
XX ± .125 INCH		SIZE A	
ANGULAR TOLERANCE OF 0°±30'		DRAWING NO. 1000322287	
FRACTIONAL DIMENSIONS ± 1/32		REV A	
* DIMENSIONS ARE INCHES		SCALE NTS	
* ALL DIMENSIONS ARE FINISHED DIMENSIONS		SHEET 1 OF 3	
* DO NOT SCALE DRAWING			

THESE DRAWINGS AND SPECIFICATIONS ARE THE PROPERTY OF JBL INCORPORATED. THEY ARE ISSUED IN STRICT CONFIDENCE AND SHALL NOT BE REPRODUCED OR USED AS THE BASIS FOR MANUFACTURE OR APPARATUS WITHOUT WRITTEN PERMISSION.

REVISIONS					
CHG	LTR	DESCRIPTION	DRPT	D.C	DATE
	A	RELEASE TO MARKETING	A		

SHOWN WITHOUT SIDE COVER



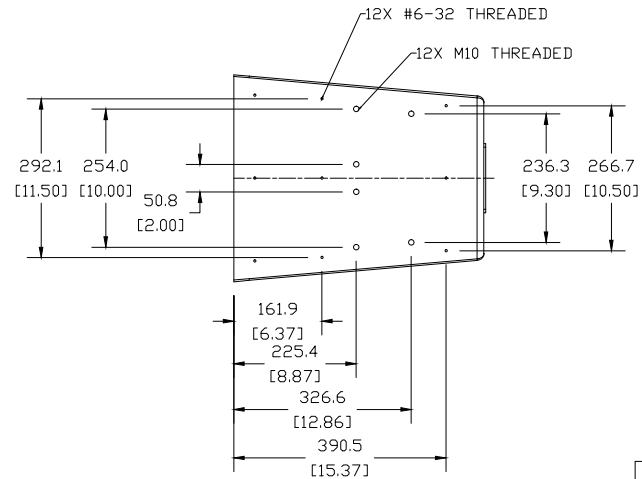
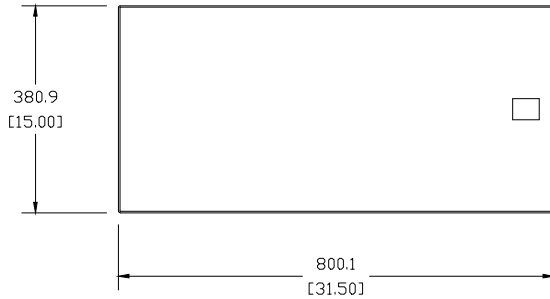
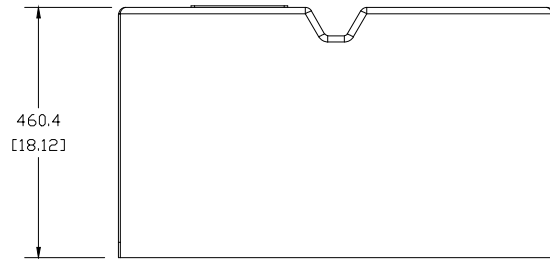
NOTES: (UNLESS OTHERWISE SPECIFIED)

JBL PROFESSIONAL A Harman International Company Northridge, California 91329 U.S.A.			
TITLE		CUSTOMER DWG VLA-C265	
SIZE	DRAWING NO.	REV	
A	1000322287	A	
SCALE NTS		SHEET 2 OF 3	


THESE DRAWINGS AND SPECIFICATIONS ARE THE PROPERTY OF JBL INCORPORATED. THEY ARE ISSUED IN STRICT CONFIDENCE AND SHALL NOT BE REPRODUCED OR USED AS THE BASIS FOR MANUFACTURE OR APPARATUS WITHOUT WRITTEN PERMISSION.

REVISIONS						
CHG	LTR	DESCRIPTION	DRPT	D.C	DATE	APPR
	A	RELEASE TO MARKETING	A			

SHOWN WITHOUT SIDE BRACKET & COVER



NOTES: (UNLESS OTHERWISE SPECIFIED)

 JBL PROFESSIONAL A Harman International Company Northridge, California 91329 U.S.A.			
TITLE		CUSTOMER DWG VLA-C265	
SIZE	DRAWING NO.	REV	
A	1000322287	A	
SCALE NTS		SHEET 3	OF 3